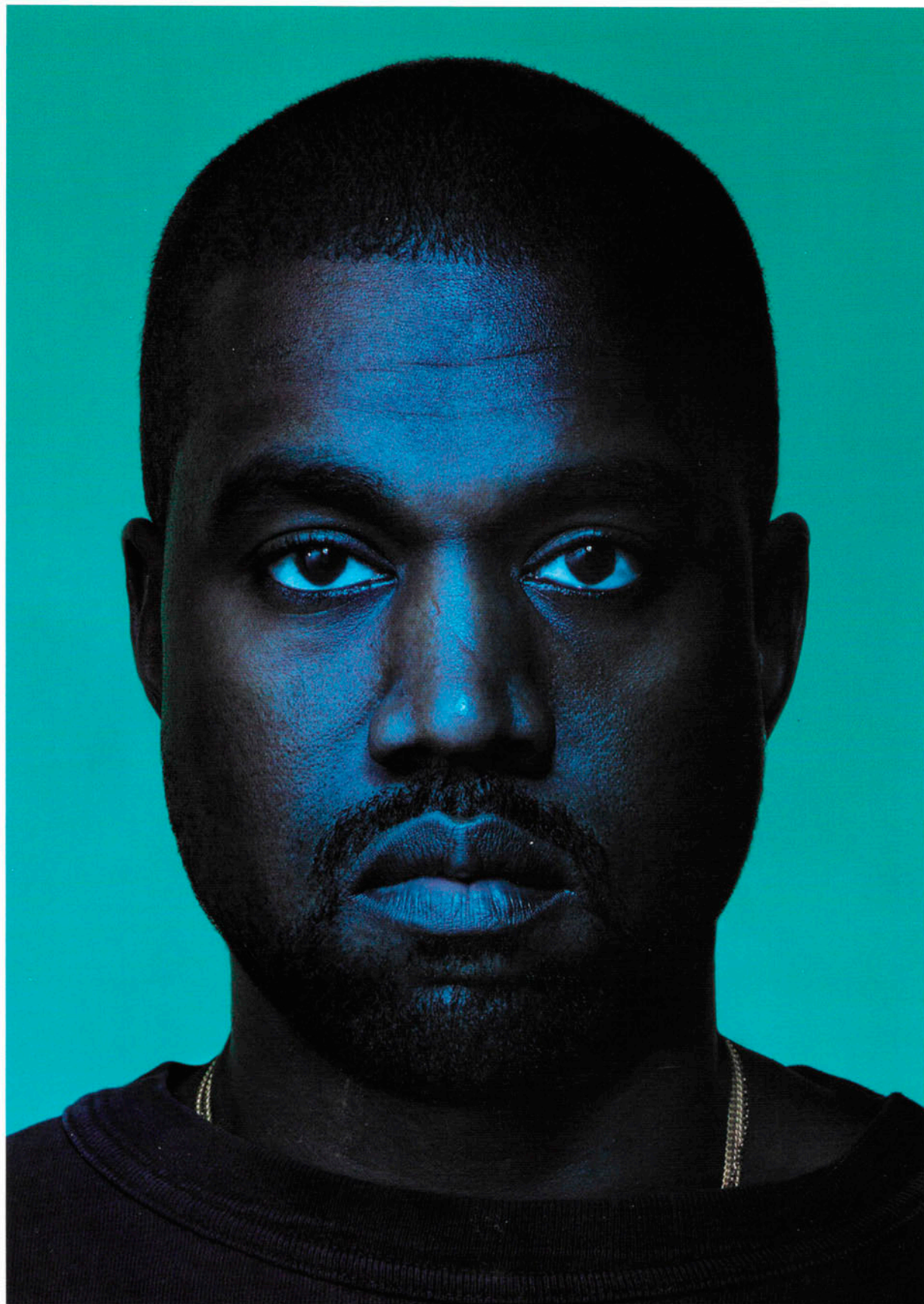


KANYE WEST

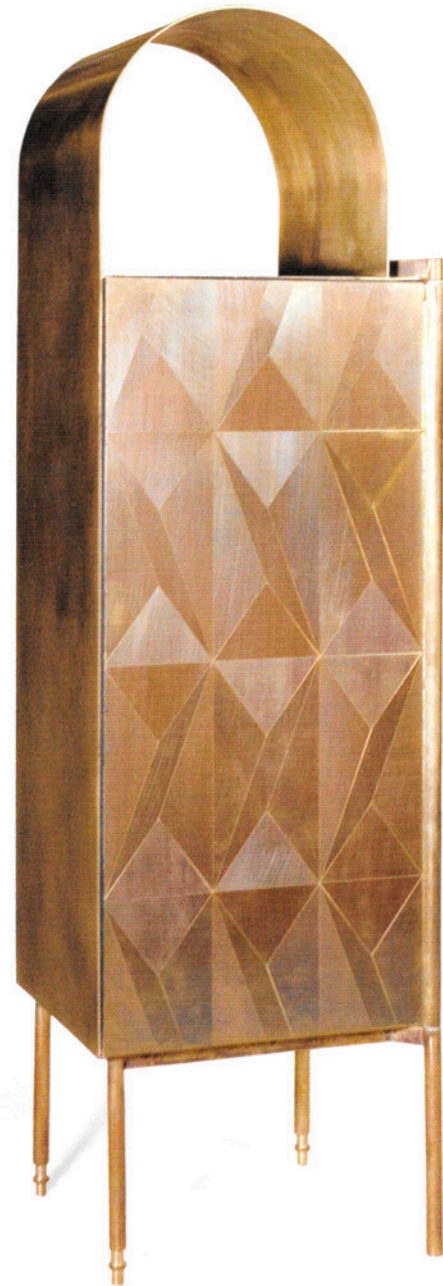
SURFACE

ISSUE 134
DECEMBER 2016 / JANUARY 2017

THE ART ISSUE



\$15 USD
7 2527401533 7 01>



19

19 Designed for the London gallery Matter of Stuff, the Marqué collection by Alessandro Zambelli includes a dry bar, coffee table, and cabinet, pictured here. The iron, copper, and brass pieces are markedly art deco.

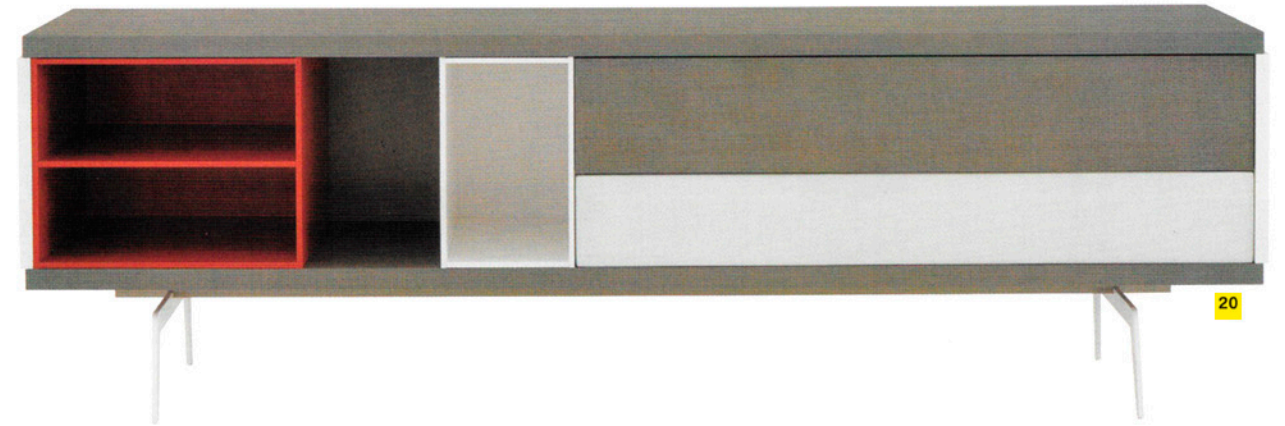
alessandrozambelli.it

20 Ligne Roset's new **Mixte** sideboard updates **Mauro Lipparini's** original 2014 collection with an elongated addition. It vibes early-eighties Memphis Group and also comes in a double-height version for expanded storage.

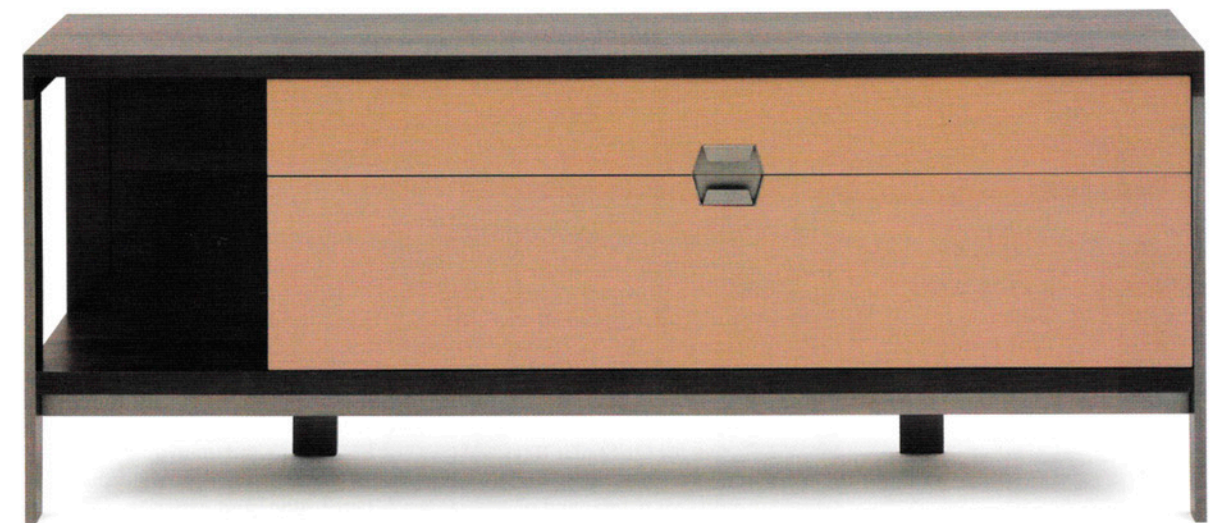
ligne-roset.com

21 Casa International's **Cavone** sideboard marries a smoked oak frame with matte lacquered drawers. Contemporary lines dominate this piece as it subtly blends Mediterranean luxury with Italian sensibility.

casaintl.com



20



21